

*It's great to be  
a member of  
Neve Shalom!*

**Neve Shalom**

SAVE THE DATES

**PROGRAMS & EVENTS**

**5773 / 2012-2013**



Sam Glaser

Neve Shalom  
250 Grove Ave  
Metuchen, NJ  
08840

732-548-2238  
ext. 14  
can2r11@  
aol.com

[www.  
neveshalom.  
net](http://www.neveshalom.net)



Benji Lovitt

**SELICHOT CONCERT and FILM: *FACES OF ISRAEL***

Sat., Sept. 8 8:30pm see information on page 6

**Donald and Ruth Kahn BOOK & AUTHOR EVENT**

Sun., Nov. 4 9:30 a.m. see information on page 5 *Please note the date in the fall!*

**Scholar-In-Residence: REUVEN KIMELMAN \***

***EROTIC AND MYSTICAL:***

***Views of Prayer, Torah and God***

Fri., Nov. 30 8 p.m., Sat., Dec. 1 9:30 a.m. & noon see information on page 2

**FREE FAMILY CONCERT: *SAM GLASER***

Sun., Dec. 16 9:40am see information on page 6

**Bob and Deborah Chalfin Lecture**

Fri., Jan. 18, 2013 7:30 p.m.

**GEORGE VESCEY *AMERICAN LIVES:***

*NY Times Sports Columnist Discusses Loving Our  
Country Through the Careers of Others*



**TU B'SHVAT SEDER & DINNER \***

Fri., Jan. 25 2013 6:30p.m. service, 7:15 p.m. Dinner, Songs, prayers,  
readings and special foods. *(There will be a dinner fee.)*

**WORLD-WIDE WRAP** Sun., Feb. 3, 2013

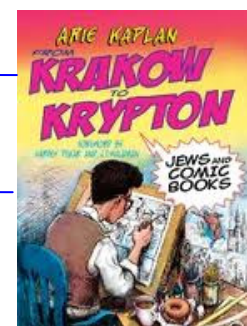
8:30 a.m.

Learn to put on Tefillin and learn some background and information.  
Refreshments will be served. *Sponsored by Men's Club.*

**ARIE KAPLAN: *Jews & Comic Books:***

***from Krakow to Krypton*** Tue., Feb. 26, 2012 7:00 p.m.

for Teens and Adults, sponsored by the Barry Miller Fund



**ISRAEL 65 CELEBRATION** Sun., Apr. 21, 2013 9 a.m.-3 p.m.

**SUSY SCHWARTZ Memorial CONCERT** Sun., Apr. 28, 2013 7:00 p.m.

**BENJI LOVITT** plus an Israeli Sing-Along *(Admission Fee)*

Benji is an American comedian who made Aliyah five years ago. He tells very funny jokes about life in Israel.

**ISRAEL SEGAL LECTURE** Speaker and date to be announced

**SHAVUOT EVENING** Tues., May 14, 2013 8:00 p.m.

Confirmation Services and adult study

\* Dinner and Luncheon fees must be paid in advance and  
cannot be placed on your synagogue bill.

*It's great to be  
a member of  
Neve Shalom!*

# Neve Shalom ADULT ED SPEAKERS 5773 / 2012-2013

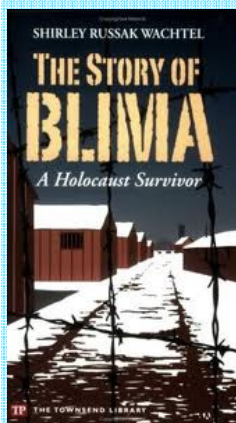
Neve Shalom  
250 Grove Ave  
Metuchen, NJ  
08840

732-548-2238  
ext. 14  
can2r11@  
aol.com

www.  
neveshalom.



Reuven Kimelman



*The Claudie and Gilbert Hayat* **SHABBAT GUEST SPEAKERS**  
Friday evenings following **7:30 p.m.** Services or  
Saturday mornings during **9:30 a.m.** Services and after Lunch

**Friday**, October 19, 2012 *Prof. JULIAN ZELIZER*  
*Princeton University* **THE ISSUES OF THE 2012 ELECTION**

**Friday and Saturday** Nov. 30– Dec. 1, 2012\* **SCHOLAR-IN-RESIDENCE**  
*Brandeis University* *Dr. REUVEN KIMELMAN*  
**Friday:** THE EROTIC AND MYSTICAL: KABBALAH OF LEKHAH DODI  
**Sat. morning:** THE DIFFERENCE BETWEEN JEWS AND CHRISTIANS SAYING  
“GOD LOVES YOU”  
**Sat. noon:** INTERACTIVE TEXT STUDY: LITERARY ANALYSIS & THE SHEMA

Yale University, Ph.D. and M.Phil.  
Jewish Theological Seminary, B.H.L., M.H.L., Rabbi  
Columbia University, B.S.  
*Author of numerous books and scholarly articles*  
*Renowned lecturer on liturgy, text and Judaism*

*\*There will be a Service on Friday at 6:30 p.m.  
followed by dinner at 7:15 p.m. and the talk at 8 p.m.  
and a lunch on Saturday, catered by Lox, Stock &  
Deli. **Dinner and luncheon fees must be paid in  
advance and cannot be placed on your bill.***

**Saturday**, December 22, 2012 *Rabbi ESTHER REED*  
*Rutgers Hillel* **JEWISH ISSUES ON COLLEGE CAMPUSES**

**Saturday**, February 9, 2013 *Prof. GARY RENDSBURG*  
*Rutgers University* **DIALECTIC IN JUDAISM:  
DIFFERING VIEWPOINTS IN THE TORAH**

**Friday**, March 8, 2013 *Prof. DAVID MECHANIC*  
*Rutgers University* **The AMERICAN HEALTHCARE PREDICAMENT**

**Friday**, April 19, 2013 *Dr. SHIRLEY RUSSAK WACHTEL*  
*Educator & Author* **BLIMA'S DAUGHTER:  
A SECOND GENERATION HOLOCAUST STORY**

**Friday**, May 17, 2013 *Prof. Yael ZARUBAVEL*  
*Rutgers University* **METAPHORS IN ISRAELI CULTURE:  
DESERT, ISLAND and WALL**

*It's great to be  
a member of  
Neve Shalom!*

# Neve Shalom FALL & SPRING CLASSES 5773 / 2012-2013



## COMPARING AND CONTRASTING JUDAISM, CHRISTIANITY, AND ISLAM

**Rabbi Gerald Zelizer**  
**Sundays 10 a.m.**  
**Beginning Oct. 14**  
**other dates to be announced**

*This class will be offered during  
both the Fall and Spring semesters.*

- Rabbi Zelizer's lectures will
- \* Show contrasts between the Christian Bible and the Hebrew Bible
  - \* Discuss the life and person of Jesus
  - \* Explain how Paul changed Christianity and departed from the Torah
  - \* Explain the Messiah concept in Judaism and in Christianity

Guest Presenter: Imam Sahib Sultan, Director of the Muslim Life Center at Princeton University, will

- \* Give an overview of Islam
- \* Tell how a Muslim lives the religion
- \* Describe the differing sects of Islam
- \* Discuss contemporary issues and controversies
- \* Show similarities and differences in beliefs of Judaism and Islam

Classes will include both lectures and discussion.



## HOW ZIONISM HAS CHANGED

**Hazzan Sheldon Levin**  
**Thursdays 7pm**  
**Oct. 11, 18, 25 Nov. 1, 8, 15**

Using videos, discussions, an interesting card game and historical facts we will explore the history and development of Zionism and discuss how it has evolved and may change in the future. Questions such as "Why American and Australian Jews have very different opinions about Israel" will be discussed.

This year the Neve Shalom Men's Club will combine two important elements of a man's life.... Monday Night Football and the study of Torah. Join us on Monday nights (dates to be announced).

For more information contact Matt Bonus [Matlicia@optonline.net](mailto:Matlicia@optonline.net)  
Registration for this free program is not through Adult Ed.  
Please contact the Men's Club.



### Talmud For Adults

at members' homes on **Monday** evenings.  
Hebrew knowledge is not needed —  
everything will have translations.  
Contact Stephan Gross 732-548-3494  
[Readers@optonline.net](mailto:Readers@optonline.net)

### A new HEBREW-SPEAKING Chug

will meet once a month on **Wednesday** nights  
at members' homes to discuss a variety of  
topics using as much *Ivrit* as possible.  
(For Moderate and Advanced Hebrew Speakers)  
Contact Jennine Shpigel [yjs84@aol.com](mailto:yjs84@aol.com)  
for meeting dates and locations.

### HEBREW READING

**Bruce Greenberg** **Mondays 7pm**  
**Oct. 15, 22, 29 Nov. 5, 12, 19, 26, Dec. 3**  
For those who know the letters but would  
like to read prayers more fluently.

### ISRAEL FILM SERIES

hosted by **Hazzan Levin**  
**January 16, 23, 30 at 7pm**  
SEE NEXT PAGE FOR DETAILS

**Neve Shalom**  
**250 Grove Ave**  
**Metuchen, NJ**  
**08840**

**732-548-2238**  
**ext. 14**  
**can2r11@**  
**aol.com**

[www.  
neveshalom.  
net](http://www.neveshalom.net)

*All dates are subject to change.  
Those who register and pay in advance will be informed of any changes.*

*It's great to be  
a member of  
Neve Shalom!*

# Neve Shalom FILM SERIES

Neve Shalom  
250 Grove Ave  
Metuchen, NJ  
08840

732-548-2238  
ext. 14  
can2r11@  
aol.com

[www.  
neveshalom.  
net](http://www.neveshalom.net)

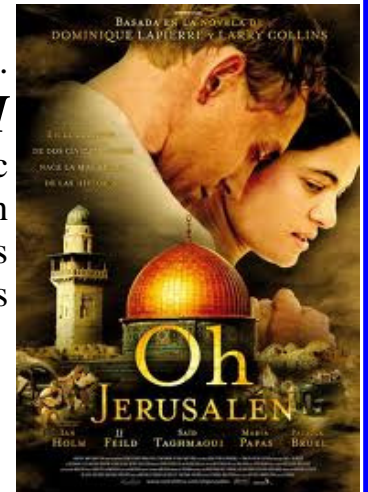
## ISRAEL FILM SERIES *hosted by Hazzan Levin*

Free if you registered for the Spring Semester. Any individual film is \$10 or \$25 for the series

Wed., Jan. 16—7 p.m.

### **OH JERUSALEM**

Based on the best selling novel about the historic struggle for Jerusalem and the birth of Israel with dramatic portrayals of both Jewish and Arab hopes and losses. This film is in English. 100 minutes



Wed., Jan. 23—7 p.m.

### **THE DEBT** (in Hebrew)

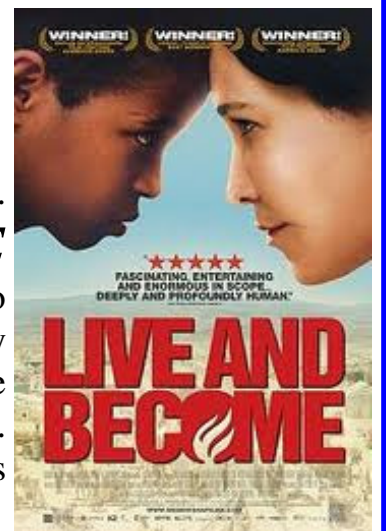
2007 Israeli film, *Hachov*, that inspired the recent Hollywood hit movie. This dramatic thriller, in Hebrew with English subtitles, is about three young Israeli secret agents who are sent to capture a Nazi doctor and the secrets that are relived thirty years later. 100 minutes.



Wed., Jan. 30—7 p.m.

### **LIVE AND BECOME**

A touching story of an Ethiopian boy, transported to Israel during Operation Moses, and the personal, family and communal changes that touch him and us as he matures. In Hebrew and French with English subtitles. 140 minutes



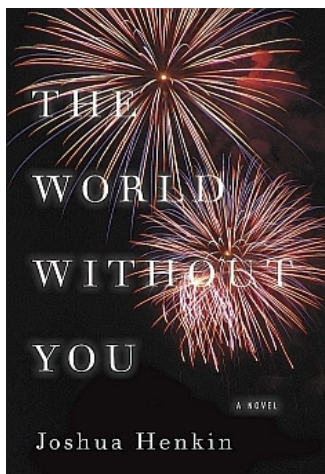
**Context** Under the sponsorship of the Jewish Federation of Greater Middlesex County the **Context** adult Jewish learning program will continue to operate in the coming year. A new cohort is being formed for this two-year intensive program of Jewish studies which operates under the direction of J.T.S. Weekly classes will be held on Tuesdays and will begin at Anshe Emeth in New Brunswick. In addition, a graduate seminar is being offered under the **Context** banner and it will feature a fall course, **Jerusalem Contested**, taught by Dr. Jonathan Gribetz. This seminar will meet on Tuesday evenings at Bnai Tikvah in North Brunswick. For further information about Context contact Lynn Feinman at 212 870-5850.

# Congregation Neve Shalom *presents:* *The Donald and Ruth Kahn* **BOOK & AUTHOR EVENT**

Note Fall Date

**Sunday, November 4, 2012**  
**Refreshments at 9:30am / Program begins at 10:00am**

**Joshua Henkin** *author of*  
***The World Without You:***  
***A Novel***



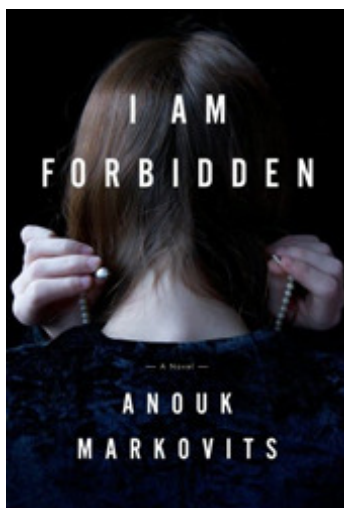
An American Jewish family gathers at its summer home in the Berkshires to mourn the youngest of the four children, a journalist killed while on assignment in Iraq. With an astonishing grasp of the details of time, place, religion and politics, Henkin draws the reader into the family's hearts and souls and transforms recent headlines into an intimate family drama.

**Leslie Maitland** *author of*  
***Crossing the Borders of Time:***  
***A True Story of War, Exile, and Love Reclaimed***



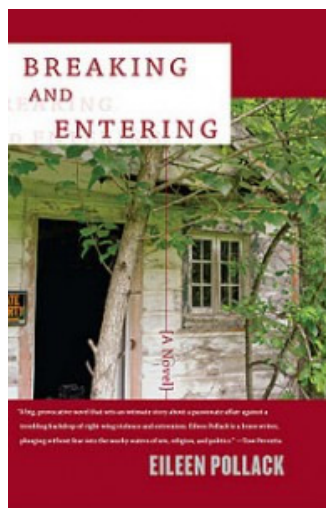
A mesmerizing memoir of one family's experience during World War II which combines an absorbing tale of lifelong love with a richly examined portrait of Jewish life, resilience and survival in Germany under the Nazis, in Occupied France, in a Cuban detention camp, and in the émigré community of New York's "Fourth Reich."

**Anouk Markovits** *author of*  
***I Am Forbidden: A Novel***



A family is torn apart by fierce belief and private longing in this honest, unprecedented and absorbing journey deep inside the most insular sect of Hasidic Jews, the Satmar. Provocative, elegant, and enthralling, *I Am Forbidden* is a family saga spanning four generations, cultures, and continents, from pre-World War II Transylvania to 1960s Paris and to contemporary New York.

**Eileen Pollack** *author of*  
***Breaking and Entering: A Novel***



It's 1995 and a family from liberal California moves to rural Michigan which seems overpopulated with religious "nuts" and militia members with ties to the Oklahoma City bomber. Weaving the personal and political, Pollack explores an America divided by religion, sexuality, fear and hatred, yet she writes with hope, compassion, humor and wisdom about the ambiguities of modern life.

- ◆ Free and open to the public ◆
- ◆ Meet authors of recently-published books and hear their stories ◆
- ◆ Books will be available for sale & authors will autograph books ◆

***19th Year of this Popular Annual Event***

Congregation Neve Shalom • 250 Grove Avenue, Metuchen, NJ 08840  
For Information: 732-548-2238 ext. 14 (Hazzan Levin) or [www.neveshalom.net](http://www.neveshalom.net)

*It's great to be  
a member of  
Neve Shalom!*

# Neve Shalom: MUSICAL SERVICES & CONCERTS

5773 / 2012-2013

Neve Shalom  
250 Grove Ave  
Metuchen, NJ  
08840

732-548-2238  
ext. 14  
can2r11@  
aol.com

www.  
neveshalom.  
net

Sat., Sept. 8 8:30 p.m. **CELLO AND PIANO: KOL NIDRE** by Max Bruch  
**SELICHOT FOR CELLO AND CANTOR** and film: **FACES OF ISRAEL**



Fri., Sept. 14 6:30 p.m. **FRIDAY ALIVE** with instruments

Mon.-Tue., Oct., 8-9 6:45 p.m. & 9:30 a.m. **SIMCHAT TORAH**  
with singing & dancing



Sun., Dec. 9 9:40 a.m. **HANUKKAH FAIR & TALENT SHOW**

Sun., Dec. 16 9:40 a.m. **FAMILY CONCERT** with **SAM GLASER**  
Neve Shalom will ROCK with one of America's leading composer-  
performers. Co-sponsored by the Jewish Federation and the Neve Shalom  
Music Fund

Fri.-Sat., Jan. 4-5 6:30pm and 9:30am **SHABBAT WITH MAGEVET**  
Yale's a cappella Jewish choir will participate in Friday  
evening and Shabbat morning services and sing at lunch

Sat., Jan. 26 6:00 p.m. **25th HOUR** TRIBUTE TO DEBBIE FRIEDMAN  
with singing and the Adult Band

SUN Feb 24 9:30am **PURIM-SHPIEL: "AVENUE SHU—SHAN"**

Sun., Mar 17 3:00 p.m. **SPIRITUAL PESACH** in Philadelphia

Sun., Apr. 21 9-3PM **ISRAEL 65 CELEBRATION** with **ARTS,  
MUSIC, VENDORS, RIDES, GAMES and FUN**

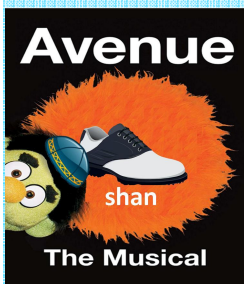
Sun., Apr. 28 7:00 p.m. **BENJI LOVITT** Susy Schwartz Memorial Concert  
(Admission fee)

May 19-22 6:30 p.m. **CANTORS CONVENTION AT THE MEADOWLANDS**  
Watch for details of outstanding concerts and events produced by Hazzan Levin

Fri., Jun. 8 7:45 p.m. **FRIDAY ALIVE** with instruments and Installation



Magevet



**FRIDAY ALIVE**



*It's great to be  
a member of  
Neve Shalom!*

**Neve Shalom  
ADULT ED INFO  
5773 / 2012-2013**

**Neve Shalom  
250 Grove Ave  
Metuchen, NJ  
08840**

**732-548-2238  
ext. 14  
can2r11@  
aol.com**

**[www.  
neveshalom.  
net](http://www.neveshalom.net)**



## **Lifelong Learning**

As the **winner of the Silver Solomon Schechter Award** for Adult Education and the **Gold Award for Excellence in Performing Arts** among all Conservative Synagogues, we are a model of the excellent and varied programs a congregation can offer. We hope that you will take advantage of our many courses, classes, discussions and special events.

If you have **questions, comments or suggestions** for future courses or speakers, please **contact Hazzan Sheldon Levin, Adult Education Director, at 732-548-2238 ext. 14** (e-mail: [can2r11@aol.com](mailto:can2r11@aol.com)) or Adult Education co-chairs: Sam Grafton or Robert Moss. We hope that you will join the many Lifelong Learners of Congregation Neve Shalom.

*The Adult Education programs are sponsored by generous grants from Congregation Neve Shalom, Gilbert and Claudie Hayat Family Endowment, Donald and Ruth Kahn Book-and-Author Event Fund, The Maier Wieder Memorial Fund, Bob and Deborah Chalfin Foundation and The Scholar-In-Residence Fund.*

Benefactors of the Scholar-In-Residence Event this past year included: *Kenneth and Carol Bernstein, Lena Feld, Morton and Sandra Fields, Priscilla Glinn, Joy and Sam Grafton, Barbara Reed and Michael Kesler, Robert and Sandra Moss and Murray Simon.*

The annual Scholar-in-Residence Event is sponsored this year by the Scholar-In-Residence Fund, the Ohev Shalom Endowment and the Gilbert and Claudie Hayat Endowment. We hope that additional supporters will contribute to the Scholar-in-Residence Fund so that we can continue this program in the future.

The Segal Family, in memory of Israel Segal, sponsors an annual guest lecture.

For other endowment opportunities speak with Rabbi Zelizer or Hazzan Levin.

### **Grateful thanks to the Adult Education Committee**

Sam Grafton and Robert Moss, Co-chairs  
Rabbi Gerald Zelizer                      Hazzan Sheldon Levin, Education Director  
Ruth Candeub, Amy Artman, Melissa Boxer, Flora Cowen, Linda Erdreich, Lena Feld,  
Sandra Fields, Morton Firelds, Julies Feinson, Gilbert Hayat, Claudie Hayat,  
Audrey Napchen, Michael Kesler, Barbara Reed, Eliot Spack and Murray Simon

# NEVE SHALOM ADULT EDUCATION FALL-SPRING 2012-13 REGISTRATION

Name person #1 \_\_\_\_\_

Name person #2 \_\_\_\_\_

Address \_\_\_\_\_ City \_\_\_\_\_ State \_\_\_\_\_ Zip \_\_\_\_\_

Phone \_\_\_\_\_ e-mail \_\_\_\_\_

Neve Shalom Member       Non-Member

Person      **FALL COURSES**

1    2

**Interfaith, Part I** *Rabbi Zelizer*

**Zionism:** *Hazzan Levin*

**Hebrew-Speaking Chug** *Jennine Shpigel*

**Talmud Group** *Steve Gross*

**Hebrew Reading** *Bruce Greenberg*

Person      **SPRING COURSES**

1    2

**Interfaith, Part II** *Rabbi Zelizer*

**Film Series** *Hazzan Levin*

**Fees: Members:** \$25 per person per semester      **Non-Members:** \$35 per person per semester  
*(Entitles each person to attend any or all courses including the Rabbi's class)*

*If you can do so, please become a sponsor of our Scholar-in-Residence Programs. A tax deductible contribution of \$250 per couple (\$125 for a single person) will list your name(s) in the program booklets and entitle you to attend ALL Adult Ed. courses without additional fees this year.*

**Sponsors of Scholar-in-Residence**    \$ \_\_\_\_\_ (*\$125 per person/\$250 per couple*)

**Total Due FALL Semester:**                    \$ \_\_\_\_\_ (*\$25 members, \$35 non-members*)

**Total Due SPRING Semester:**                \$ \_\_\_\_\_ (*\$25 members, \$35 non-members*)

**Total Amount Paid**                                \$ \_\_\_\_\_

*Make check payable to: NEVE SHALOM ADULT ED*

*Please mail or bring this form and the fees on or before the first class to:*

**NEVE SHALOM      250 Grove Avenue      Metuchen, NJ 08840**  
*for information call Hazzan Sheldon Levin 732-548-2238 ext. 14*  
*or e-mail can2r11@aol.com*

*Classes and dates are subject to change;  
please register and pay the fees in advance  
so we can inform you of any changes.*